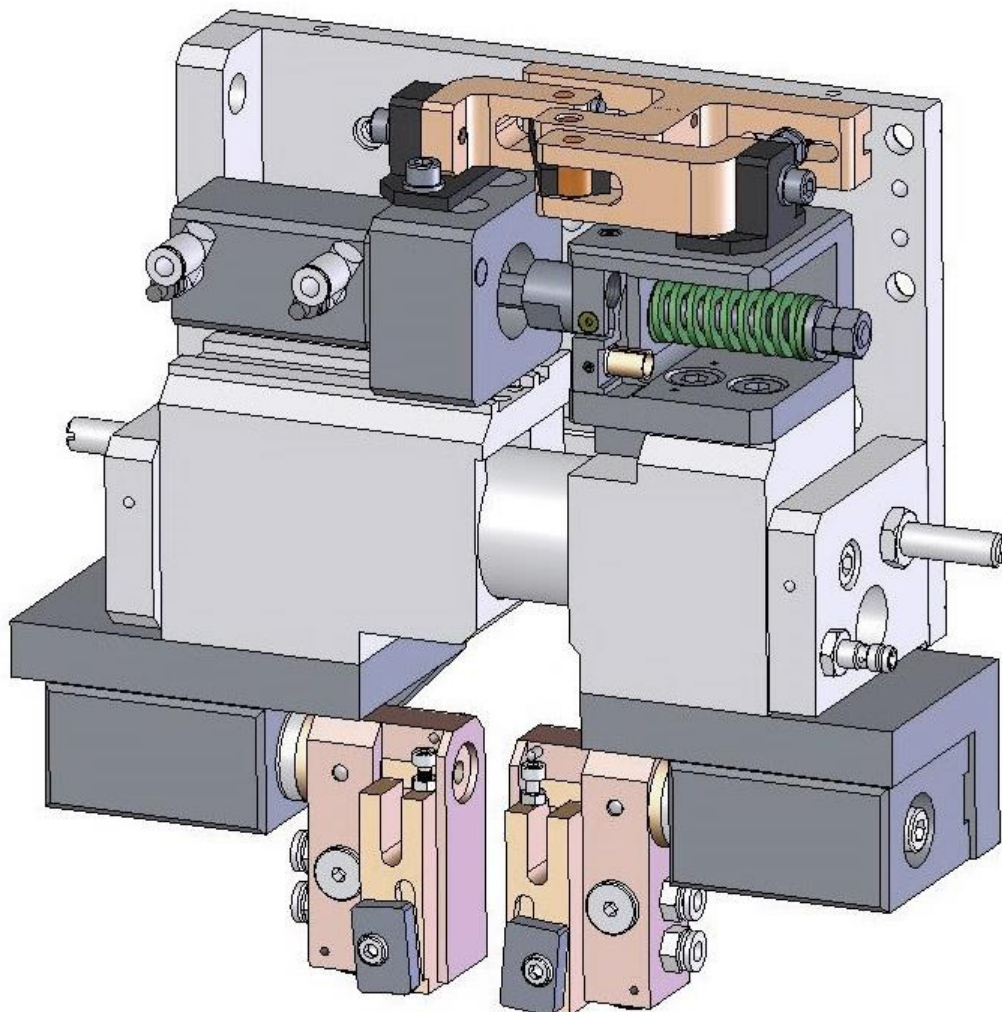


Technical data-sheet **Welding-pincer SZ-2005**

Name and address of manufacturer

KombiTec GmbH
Westendstraße 5
D-87488 Betzigau / Germany

Tel: +49 (0) 831 / 960 398 - 0
Fax: +49 (0) 831 / 960 398 - 10



Benefits:

- Welding-pincer with welding-forces up to 300 N
- Due to modular principle highest compatibility to other KombiTec products
- Compact, but highly flexible constructed with lowest possible weight
- Precise positioning-accuracy, stability and robustness due to pre-stressed roller-bearings
- Best reproducibility by plunging scenes
- Compatibility to competitors' products
- Due to loaded springs fastest response while welding
- Easy adjustment of sensors, damping and stroke
- Simple upgrade-opportunity for displacement-sensors
- Swim-mechanisms available (to "orientate" plier to product)
- Mass-levelling for vertical mounting
- Parallel-movement-unit for electrode-holder available

Application areas:

Suitable for weldings especially in sub-optimal reachable positions.
Typical applications for these high-performance-pliers are:

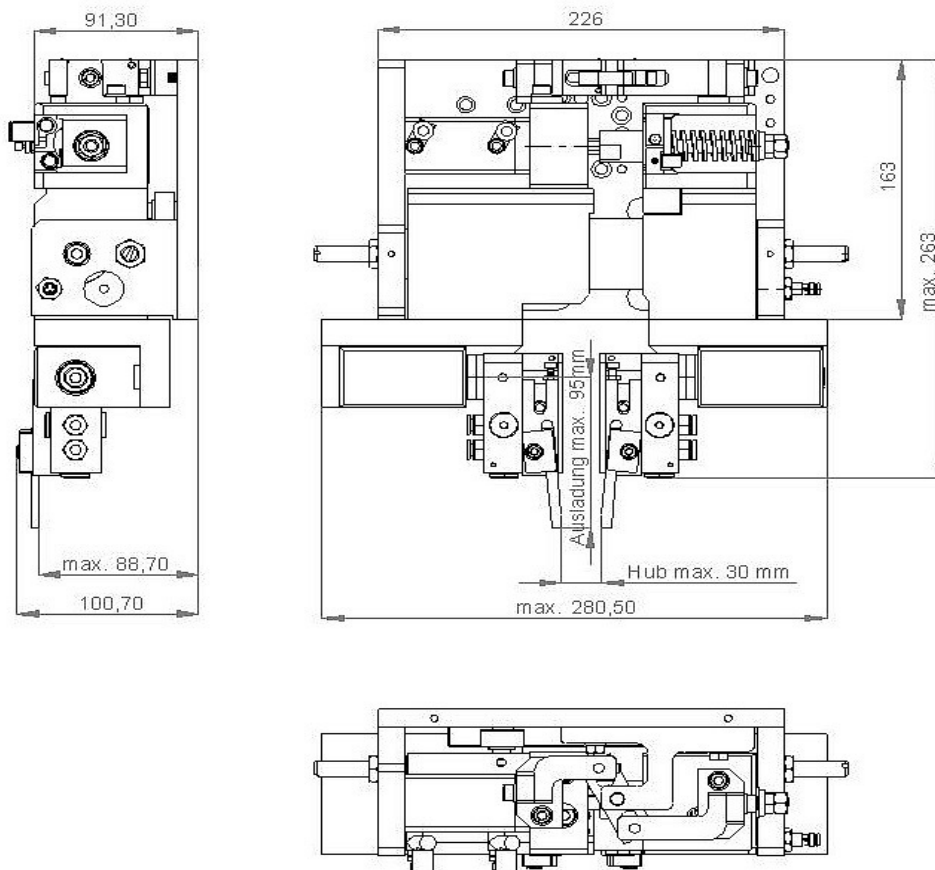
- Light industry: Tungsten-filaments welded to molybdenum pins
- Automotive: moulded stamped parts welded with sensors
- Electric / Electronical: elements and wires to circuit boards or substrates
- Energy technique: contacts for solar power generators and equipment
- Production of sensors: micro-, small- and medium-size applications
- Consumer goods production: small size spot welding applications

Technical changes:

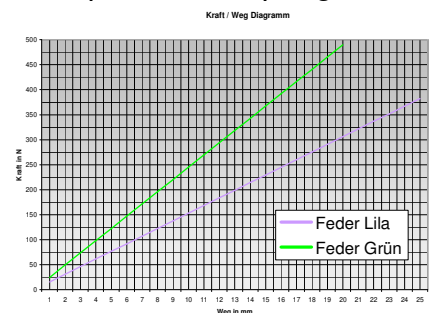
Technical modification and price changes without notices. All dimensions are in „mm“.
No liability can be accepted for printing errors.

Technical data:

Cylinder-diameter working stroke:	Ø 32 mm / Ø 20 mm
Working pressure:	3 – 5 bar
Pressing force between electrodes:	up to max. 300 N
Medium pressed air:	filtered 5 µm, free of water / dried, oiled or un-oiled
Pneumatic hose:	Ø 6 mm
Working temperature:	0° C – 60° C
Repeatability:	± 0,10 mm
Working temperature:	0° C – 60° C
Max. stroke of electrodes:	30,0 mm
Max. displacement-stroke:	6,0 mm
Air-consumption per cycle:	approx. 0,15 L (at 5,0 bar and max. stroke)
Total weight:	ca. 10,0 kg (net)



Displacement-spring:



Picture: Dimension welding-pincer SZ-2005 with pneumatic drive, without mounted attachments

Welding-pincer SZ-2005

Options for configuration:

